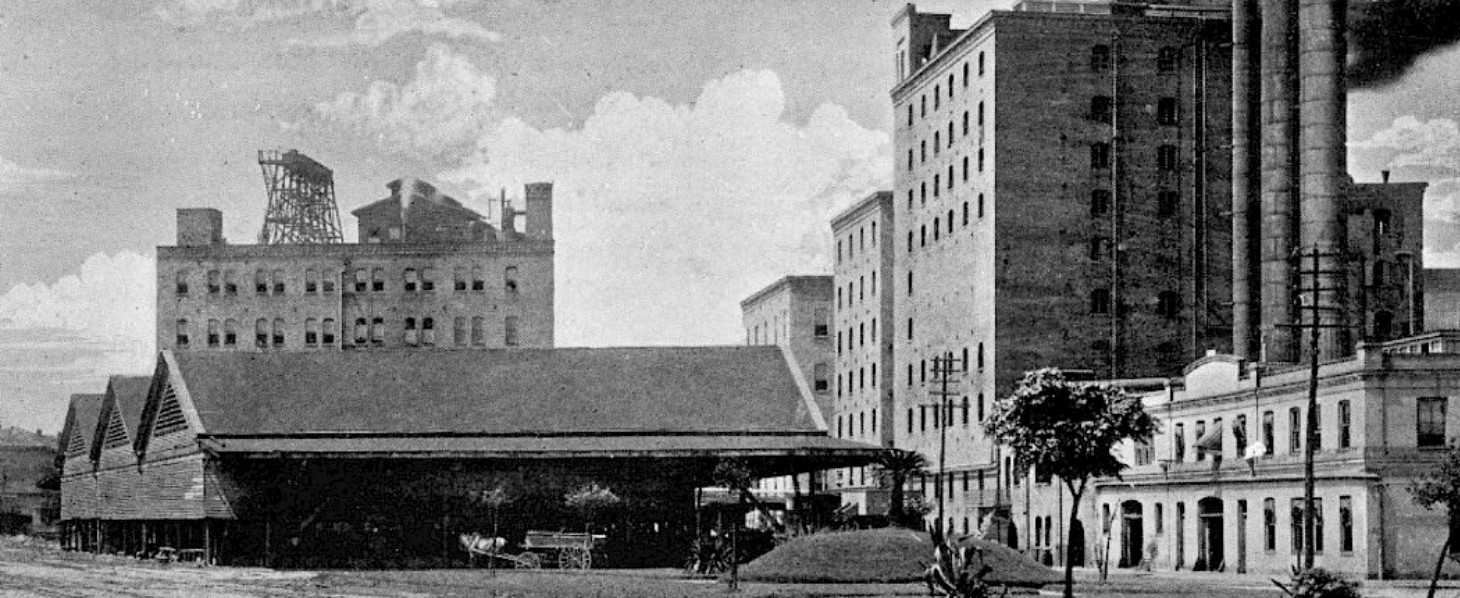




11 Iberville St, New Orleans, LA 70130  
504-699-8100 | [info@one11hotel.com](mailto:info@one11hotel.com)  
[one11hotel.com](http://one11hotel.com)  
[@ONE11Hotel](https://www.instagram.com/ONE11Hotel)







# THE SWEET HISTORY OF NEW ORLEANS & ONE11

In 1717, Jean-Baptiste Le Moyne de Bienville identified the Mississippi River's alluvial batture as the foundation for New Orleans. By the 19th century, this land transformed into the thriving Sugar District. The 18th century saw downtown New Orleans dominated by sugarcane plantations, with the early 19th century marked by innovations and expertise influx from Saint-Domingue refugees. The Sugar Landing Era from 1830 to 1870 witnessed the batture as a trading hub, leading to the rise of significant commercial avenues like New Levee Street. Despite facing challenges such as the Civil War's impact, the industry rebounded by 1893, leveraging import tariffs and railroads. The subsequent Sugar District Era (1870-1930) emphasized centralized processing, but the early 20th century saw a decline due to multiple factors. Today, the ONE11 Hotel stands as a testament to this rich history, bridging the city's past and present.





# ONE11 Hotel

Situated on the Mississippi Riverfront, by Woldenberg Park and the Audubon Aquarium, ONE11 Hotel offers a sleek and sophisticated ambiance with evocative design, while paying homage to New Orleans' rich sugar history. Once the epicenter of the city's thriving Sugar District in the late 19th and early 20th centuries, 111 Iberville has been meticulously restored from its industrial roots to the newest Vieux Carré hotel to open in half a century.

[Book Your Stay](#)

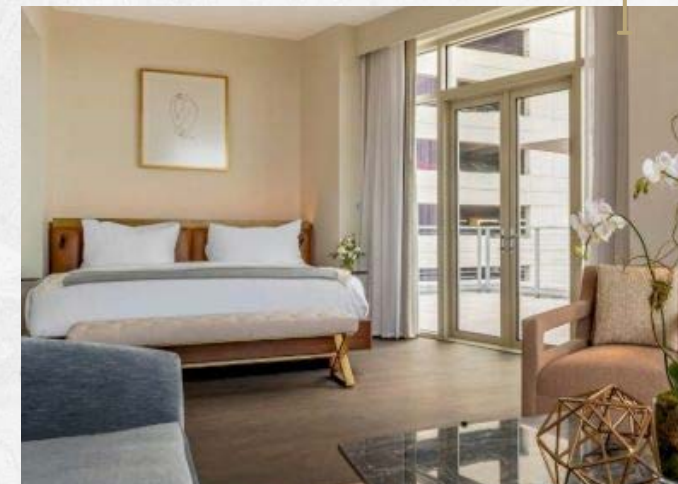


## CRESCENT SWEET

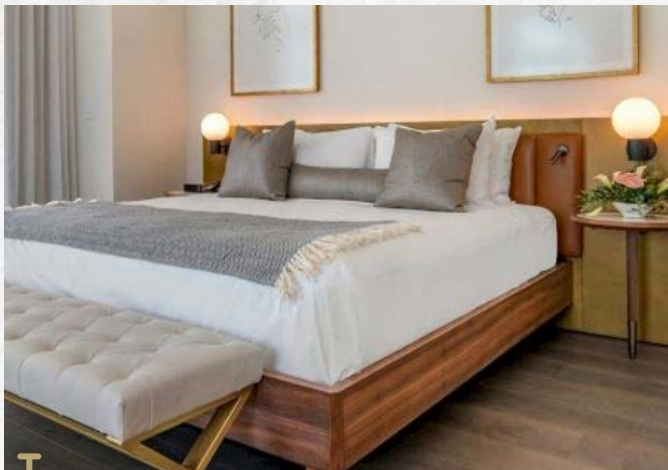
Take in views of the Mississippi River that gave the Crescent City its name. This spacious, modern "Sweet" pays tribute to our storied history as a Sugar Mill and an icon from the Sugar Era. Lay back on a plush pillowtop king bed dressed in luxe Matouk linens. Enjoy back-lit mirrors for getting ready for a night out on the town. With a large glass walk-in shower, Malin+Goetz bath amenities and a Keurig coffee maker, this approximately 500-square-foot space offers everything you need for a luxurious NOLA escape.

## FRENCH QUARTER SWEET

Relax in pure delight in this penthouse "Sweet" that pays tribute to our history as a Sugar Mill. Lay back on a plush pillowtop king bed dressed in luxe Matouk linens. Gaze out over the French Quarter and Mississippi River from the private terrace with seating, and enjoy back-lit mirrors for getting ready for a night out on the town. With a large glass walk-in shower, Malin+Goetz bath amenities and Keurig coffee maker, this approximately 462-square-foot space offers everything you need for an extravagant and inspiring stay.







## RIVERBEND SWEET

Indulge in superior style with this 8th-floor “Sweet” featuring a king bed, living area, wet bar, and private outdoor terrace with seating and unobstructed views of the Crescent of the Mississippi River. Once part of a Sugar Mill, you and your travel companions will start to unwind the moment you arrive. Slip into a robe and lay back on a plush pillow-top king bed dressed in luxe Matouk linens. Gaze out over the French Quarter and Mississippi river and enjoy Malin+Goetz bath amenities and back-lit mirrors for getting ready for a night out on the town. With a large glass walk-in shower and Keurig coffee maker, this approximately 540 square-foot space offers everything you need for an extravagant stay with friends or family.

## KING ROOM

Start to unwind the moment you arrive in this warm, modern delight in the French Quarter. Slip into a robe and lay back on a plush pillowtop king bed dressed in luxe Matouk linens. Prepare a coffee with your Keurig coffee maker and gaze out over the French Quarter or views of the Mississippi river. Enjoy a back-lit mirror and Malin+Goetz bath amenities for getting ready for a night out on the town. With a large glass walk-in shower, this approximately 275-square-foot space offers everything you need for a restful stay.



## PETITE ROOM - TWO DOUBLE BEDS

Exposed brick. Natural light. Tailored simplicity. This inviting space features custom-made furnishings for you and your travel companion's highest comfort. Slip into a robe and lay back on plush beds dressed in luxe Matouk linens. Enjoy a back-lit mirror for getting ready for a night out on the town. With a large glass walk-in shower, Malin+Goetz bath amenities, Keurig coffee maker and plush robes, this approximately 253-square-foot space offers everything you need for your NOLA escape.







## PREMIUM ROOM - TWO QUEEN BEDS

At approximately 340 square feet, stretch out, and relax in this inviting room with two queen beds. Soak up incomparable views of the French Quarter and Mississippi River and rest on fine thread count linens. Enjoy a generous bathroom with a large glass walk-in shower, luxurious bath amenities and back-lit mirrors. With Matouk linens, top quality bath amenities and a Keurig coffee maker, this approximately 340 square-foot space provides a relaxing and inspiring stay.

## TERRACE KING

Enjoy your private terrace in this luxe room with contemporary decor and natural light. Start to unwind the moment you arrive. Slip into a robe and lay back on a plush pillowtop king bed dressed in luxe Matouk linens. Enjoy a back-lit mirror for getting ready for a night out on the town. With a large glass walk-in shower, top quality bath amenities and Keurig coffee maker, this approximately 263-square-foot space offers everything you need for a restful and inspiring stay.





# AMENITIES

## GUESTROOM AMENITIES:

- Frette Linen Waffle Bathrobes
- Glass Walk-In Shower
- Pillow Top Mattress
- Mailin + Goetz Bath Amenities
- Complimentary Bottled Water
- Bluetooth Connectivity Sound System
- Adjoining Room Options
- High Speed Wireless Internet Access

## ON SITE AMENITIES:

- Batture Bistro + Bar
- Breakfast Available
- Courtyard with Outdoor Firepit
- High Speed Wireless Internet Access
- Outdoor Pool
- Outdoor Seating on Rooftop Terrace
- Pawdi Gras Pet Program
- Unparalleled Views of the French Quarter & Mississippi River







# BATTURE BISTRO + BAR

## Sip + Savor in Style

Batture Bistro + Bar sources fresh, seasonal ingredients to create New Orleans inspired offerings that infuse classic well-known dishes with a Creole twist. Sit back and relax in a sophisticated setting where original 19th century cypress beams add character and pay tribute to the building's layered history.

The climate-controlled porch is a great setting for dining al fresco, and on a cool New Orleans evening, you can cozy up to the firepit and enjoy sips and bites on the poolside deck.







# GROUP RATES

## The Sweetest Group Getaways



ONE11's range of sleeping room options make us one of the best hotels in the French Quarter. Whether you're looking for several rooms or an entire floor of 13 rooms, or more, our boutique hotel's modern accommodations and charming common areas make it easy for the entire gang to stay together. Our professional staff can help you customize a room block in New Orleans, organize incentive trips and plan executive stays.







# GET SOCIAL

## At ONE11



Gather in our Sugar Sweet, with sparkling pool views, Bluetooth audio system, dry bar, large seating area and one and one-half bathrooms. Select our Loading Dock, located on the first floor, with a custom bar and light bites created by Batture Bistro + Bar for that perfect intimate reception. Our team is standing by to help you explore all possibilities. We can also coordinate a discounted group block for sleeping arrangements upstairs.

[Take A Virtual Tour](#)

[Start Planning](#)



# Group Itineraries

- Weddings
- Bachelor/Bachelorette Parties
- Corporate Retreats
- Family Reunions
- Social Groups
- Team Building & Retreats
- Entertainment Groups

## 4-DAY ITINERARY

### DAY 1

- 3p Arrival & Check-In
- 6p Welcome Cocktails at Batture
- 8p Group Dinner at Arnaud's

### DAY 2

- 8a Breakfast at Batture
- 9a Morning Gathering in Loading Dock
- 12p Catered Lunch from Batture
- 1p Afternoon Gathering at Loading Dock
- 4p - Enjoy Free Time & Dinner On Own in French Quarter
- 9p Live Jazz Music at The Spotted Cat

### DAY 3

- 8a Breakfast at Batture
- 9a Meeting at the Loading Dock
- 12p Lunch at Killer Po Boys
- 2p Bayou Airboat Swamp Tour
- 4p Explore the City On Own
- 6p Private Dinner at Mardi Gras World

### DAY 4

- 8a Breakfast On Own
- 11a Check Out







# AROUND TOWN

Smoothie King Center - 1.4 mi.

Caesars Superdome - 1 mi.

Hancock Whitney Center - 0.7 mi.

Harrah's Casino - 0.3 mi.

World Trade Center - 0.2 mi.

Riverwalk Outlet - 0.5 mi.

Audubon Aquarium - 0.3 mi.

One Canal Place - 0.1 mi.

Woldenberg Park - 0.2 mi









